



800-504-5684

info@bigdogbumpers.com

www.bigdogbumpers.com

## DODGE 06-08 4500/5500 FRONT BUMPER REPLACEMENT WINCH READY

PART NUMBER : 510 111 0600

TOOLS NEEDED : 10mm SOCKET OR WRENCH  
19mm SOCKET AND WRENCH  
24mm SOCKET AND WRENCH  
LEVEL ( IF AVAILABLE )

**\*\* DUE TO LOCATION OF WINCH TRAY YOU WILL LOOSE FACTORY TOW HOOKS \*\***

•HOWEVER THIS BUMPER WILL ALLOW FOR FACTORY TOW HOOKS FROM THE 2500/3500 MODELS, WHICH CAN BE PURCHASED FROM YOUR LOCAL DODGE DEALERSHIP ( DODGE FACTORY PART # 82207917 )\*

• NON-WINCH READY BUMPER DOES ALLOW TO KEEP FACTORY TOW HOOKS

1. Loosen front turbo intercooler by removing 10mm bolts from top cross frame. SEE PICTURE #1 This will give you movement needed to remove factory bolt plate from factory bumper frame brackets.
2. Remove tow hooks ( 24mm) from frame, pull out from back side of bumper.
3. Remove factory bolt plate and nuts from frame. ( Hold factory bumper while removing bolt plates ) Retain factory hardware for installation of new **Big Dog** bumper.
4. Take off factory bumper. With factory bumper off remove fog lights ( if equipped ) and install onto new bumper, using factory hardware. As well as factory wire harness.
5. Install **Big Dog** frame brackets onto truck. \* They will fit over the frame with **Big Dog** bracket bolt holes to the inside of the frame. SEE PICTURE #2
6. Insert factory bolt plate thru **Big Dog** bracket and frame, from inner side to outer side. SEE PICTURE #3 Also insert 5in. Bolt provided thru bottom bracket hole, thread nuts hand tight for now.
7. Place level on front flat part of **Big Dog** frame bracket, tighten bolts to 70 lbs. of torque. \* By keeping the frame brackets level, this will make adjusting bumper to lines of truck easier when you put on new **Big Dog** bumper.
8. Install bumper by matching up frame brackets to bumper brackets; insert 4 - 2in.x 1/2in.bolts provided from front to back on each bracket. Hand tighten for now.
9. Adjust bumper up-down and left-right, to get good even fit under headlights and fender lines.
10. Once adjusted for fit, tighten the 2 bolts on the outer side of bracket to 70 lbs. of torque. Bumper will now stay in place.
11. Install safety support brackets by, removing nut from middle factory frame bolt. Place rounded end of bracket at hole located at the bottom backside of vertical support, insert 1 1/2 in bolt from outer side to inner side thread bolt and hand tighten at this time. SEE PICTURE #4
12. Place boxed end of bracket over middle factory frame bolt, thread nut and tighten bolts to 70 lbs. of torque. SEE PICTURE #5



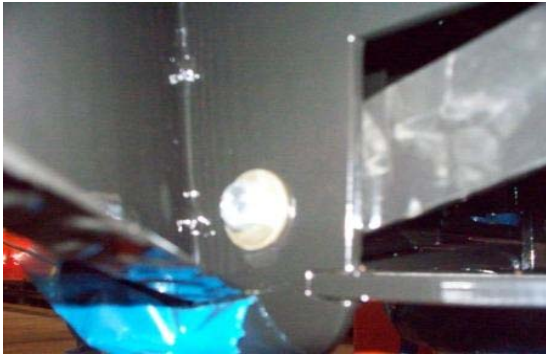
PICTURE # 1



PICTURE # 2



PICTURE # 3



PICTURE # 4



PICTURE # 5

HARDWARE PROVIDED : 2 - 5 IN. BOLTS  
2- 1 ½ IN. BOLTS  
8 - 2IN. BOLTS  
12 - FLAT WASHERS  
12 - FLANGE NUTS

